



EP30CA

Specifications

Electric powered lift trucks

4 wheel 72 V, 3.0 tonnes



Cat® Lift Trucks.

Your partner in materials handling.

	EP30CA					
Mast Type	h3+s	h1	h4	h2/h5*	Tilt angle (fwd - back)	Q @ c = 500mm kg
	mm	mm	mm	mm		
Simplex	3000	2215*	4000	155	6°/12°	3000
	3300	2365	4300	155	6°/12°	3000
	3500	2465	4500	155	6°/12°	3000
	3700	2565	4700	155	6°/12°	3000
	4000	2715	5000	155	6°/12°	3000
	4300	2965	5300	155	4°/6°	2800
	4500	3065	5500	155	4°/6°	2550
	4700	3165	5700	155	4°/6°	2350
	5000	3315	6000	155	4°/6°	2100
Duplex	3000	2215*	4000	1215	6°/12°	3000
	3300	2365	4300	1365	6°/12°	3000
	3500	2465	4500	1465	6°/12°	3000
	3700	2565	4700	1565	6°/12°	3000
	4000	2715	5000	1715	6°/12°	3000
	4300	2965	5300	1965	4°/6°	2800
	4500	3065	5500	2065	4°/6°	2550
	4700	3165	5700	2165	4°/6°	2350
	5000	3315	6000	2315	4°/6°	2100
Triplex	3500	1865*	4500	865	4°/6°	3000
	3700	1915*	4700	915	4°/6°	3000
	4000	2015*	5000	1015	4°/6°	2900
	4300	2115*	5300	1115	4°/6°	2800
	4500	2165	5500	1165	4°/6°	2500
	4700	2265	5700	1265	4°/6°	2300
	5000	2365	6000	1365	4°/6°	2000
	5300	2465	6300	1465	4°/6°	1700
	5500	2515	6500	1515	4°/6°	1500
	5700	2715	6700	1715	1.5°/6°	1300
	6000	2765	7000	1765	1.5°/6°	1150
	6300	2865	7300	1865	1.5°/6°	950
	6500	2965	7500	1965	1.5°/6°	850
	6700	3115	7700	2115	1.5°/6°	750
	7000	3215	8000	2215	1.5°/6°	600

* Lower than overhead guard.

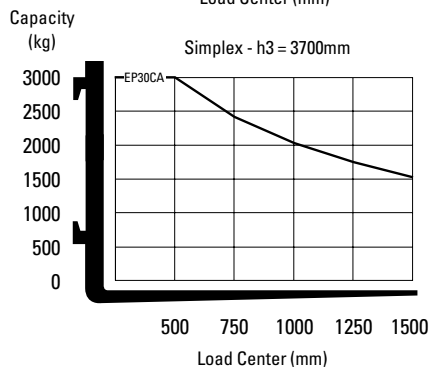
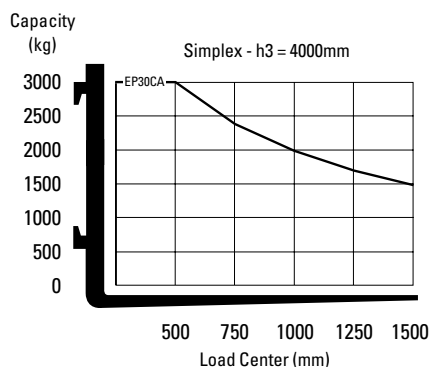
Mast Performance and Capacity

- h1 Height with mast lowered
- h2 Standard free lift
- h3 Lift height
- h4 Height with mast raised
- h5 Full free lift
- Q Lifting capacity, rated load
- c Load centre (distance)

Battery Compartment	EP30CA***
Length (min)	mm 988
Width (min)	mm 1100
Height (min)	mm 477
Minimum Weight	kg 1095

*** 72V

Capacities at various load centers



info@catlifttruck.com
www.catlifttruck.com

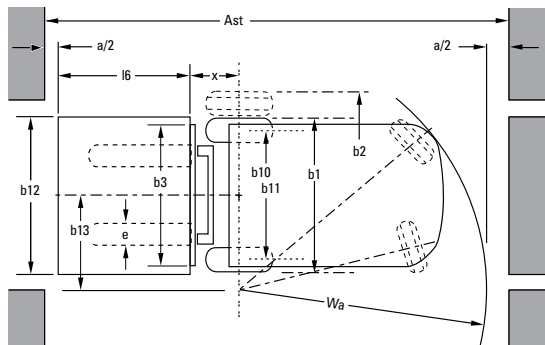
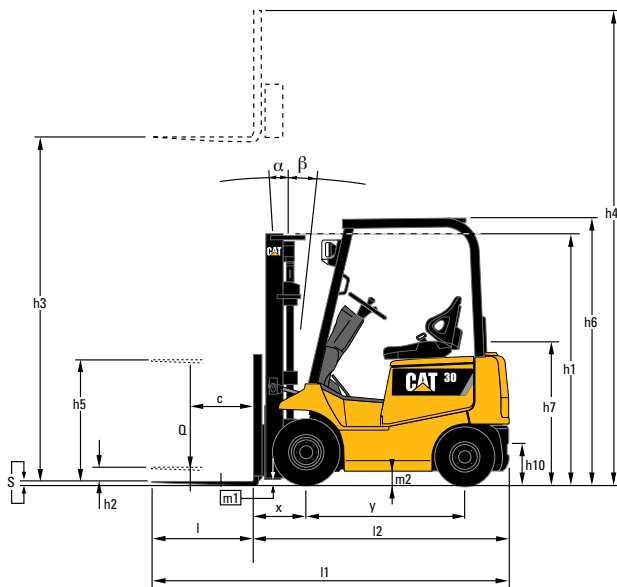
CESC1648AME-K(03/15)
Copyright ©2015, MCFE. All rights reserved.
CATERPILLAR, CAT, BUILT FOR IT, their respective logos,
'Caterpillar Yellow' and the 'Power Edge' trade dress, as well
as corporate and product identity used herein, are trademarks
of Caterpillar and may not be used without permission.
Printed in The Netherlands

NOTE: Performance specifications may vary depending on standard manufacturing tolerances, vehicle condition, types of tyres, floor or surface conditions, applications, or operating environment. Trucks may be shown with non-standard options. Specific performance requirements and locally available configurations should be discussed with your Cat lift trucks Dealer. Cat Lift Trucks follows a policy of continual product improvement. For this reason, some materials, options and specifications could change without notice.



Characteristics		
1.01	Manufacturer (abbreviation)	Cat Lift Trucks
1.02	Manufacturer's model designation	EP30CA
1.03	Power source: (battery, diesel, LP gas, petrol)	Electric
1.04	Operator type: pedestrian, (operator)-standing, -seated	Seated
1.05	Load capacity	Q (kg) 3000
1.06	Load centre distance	c (mm) 500
1.08	Load distance, axle to fork face	x (mm) 470
1.09	Wheelbase	y (mm) 1600
Weight		
2.01	Truck weight, without load / including battery (simplex mast, lowest lift height)	kg 6010
2.02	Axle loading with maximum load, front / rear (simplex mast, lowest lift height)	kg 6735 / 1035
2.03	Axle loading without load, front / rear (simplex mast, lowest lift height)	kg 1935 / 2835
Wheels, Drive Train		
3.01	Tyres: V=solid, L=pneumatic, SE=solid pneumatic - front/rear	L/L
3.02	Tyre dimensions, front	(mm) 28x9-15-12PR
3.03	Tyre dimensions, rear	6.50-10-10PR
3.05	Number of wheels, front / rear (x = driven)	2 x / 2
3.06	Track width (centre of tyres), front	b10 (mm) 955
3.07	Track width (centre of tyres), rear	b11 (mm) 980
Dimensions		
4.01	Mast tilt, forwards / backwards	α/β ° 6/12
4.02	Height with mast lowered (see tables)	h1 (mm) 1980
4.03	Free lift (see tables)	h2 (mm) 155
4.04	Lift height (see tables)	h3 (mm) 2955
4.05	Overall height with mast raised	h4 (mm) 4000
4.07	Height to top of overhead guard	h6 (mm) 2225
4.08	Seat height	h7* (mm) 1200
4.12	Tow coupling height	h10 (mm) 350
4.19	Overall length	l1 (mm) 3580
4.20	Length to fork face (includes fork thickness)	l2 (mm) 2510
4.21	Overall width	b1 (mm) 1185
4.22	Fork dimensions (thickness, width, length)	s, e, l (mm) 44x122x1070
4.23	Fork carriage to DIN 15 173 A/B/no	3A
4.24	Fork carriage width	b3 (mm) 1005
4.31	Ground clearance under mast, with load	m1 (mm) 130
4.32	Ground clearance at centre of wheelbase, with load (forks lowered)	m2 (mm) 95
4.33	Working aisle width with 1000 x1200 mm pallets, crosswise	Ast (mm) 3915
4.34a	Working aisle width with 800 x1200 mm pallets, lengthwise	Ast (mm) 3715
4.35	Turning circle radius	Wa (mm) 2210
4.36	Minimum distance between centres of rotation	b13 (mm) 800
Performance		
5.01	Travel speed, with/without load	km/h 13.5/15.5
5.02	Lifting speed, with/without load	m/s 0.32/0.55
5.03	Lowering speed, with/without load	m/s 0.45/0.45
5.05	Rated drawbar pull, with/without load	N 1920/2510
5.06	Maximum drawbar pull, with/without load (3 min short duty)	N 12130/12720
5.07	Gradeability, with/without load	% 3/6
5.08	Maximum gradeability, with/without load	% 16/20
5.09	Acceleration time (10 metres) with / without load	s 5.0/4.3
5.10	Service brakes (mechanical / hydraulic / electric / pneumatic)	Hydraulic
Electric motors		
6.01	Drive motor capacity (60 min. short duty)	kW 10
6.02	Lift motor output at 15% duty factor	kW 15
6.03	Battery to DIN 43 531/35/36 A/B/C/no	-
6.04	Battery voltage / min- max capacity	V /Ah 72V/450
6.05	Battery weight min	kg 1095
6.06	Energy consumption according to VDI 60 cycle	kWh/h -
Miscellaneous		
8.01	Type of drive control	Inverter
8.02	Maximum operating pressure for attachments	bar 172
8.03	Oil flow for attachments	l/min 9
8.04	Noise level, value at operator's ear (EN 12053)	dB(A) -
8.05	Towing coupling design / DIN type, ref.	-





$Ast = Wa + x + l6 + a$
 Ast = Working aisle width with load
 a = Safety clearance (200 mm)
 $l6$ = Pallet length (800 or 1000 mm)
 $b12$ = Pallet width (1200 mm)

Lower Cost of Ownership

- Advanced AC motor technology provides high torque, faster acceleration, better ramp performance and smooth, quiet, controlled operation.
- AC controller provides optimum performance and energy efficiency.
- Auto power-off mode automatically shuts off forklift after truck remains unused after 15 minutes.
- 4 modes of Regenerative braking increase battery life, productivity, and performance whilst reducing brake wear.
- The easy access to control panel, traction and hydraulic motors reduces servicing time and effort.
- Self-diagnostic function display icon or message, including fault history folder, allows operator and service engineer to facilitate maintenance.

Unmatched Productivity

- Electric Power Steering System with speed compensation as standard for effortless maneuverability.
- Vacuum Fluorescent Display (VFD) instrumentation panel keeps driver informed of truck hours and state of battery, even in bright daylight.
- Compact chassis dimensions contribute to supreme maneuverability in tight right-angled stacking aisles.
- Pitching Control System reduces cargo vibration or swaying when going over humps or travelling on uneven surfaces.

Safety and Ergonomics

- High visibility mast and overhead guard.
- Back up alarm supplied as standard.
- Presence Detection System (PDS) protects operator, pedestrians and loads by disengaging drive and hydraulic functions when the operator leaves the seated operating position.
- New generation AC controller ensures lowest noise level in its class.
- Neutral start safety function to prevent unintentional movement of the truck.
- Ergonomically designed operator's compartment features a full suspension seat, adjustable steering column and comfortably placed hydraulic control levers.
- Low footstep and well-placed grab bar makes on/off access easy. Even in repetitive situations.
- Controlled roll down and excellent ramp performance allow safe and efficient operation.

Options

- Lift height selector
- Cold storage specification
- Laser pointer
- Side shifter
- Fingertip control
- Horizontal tilt display on monitor